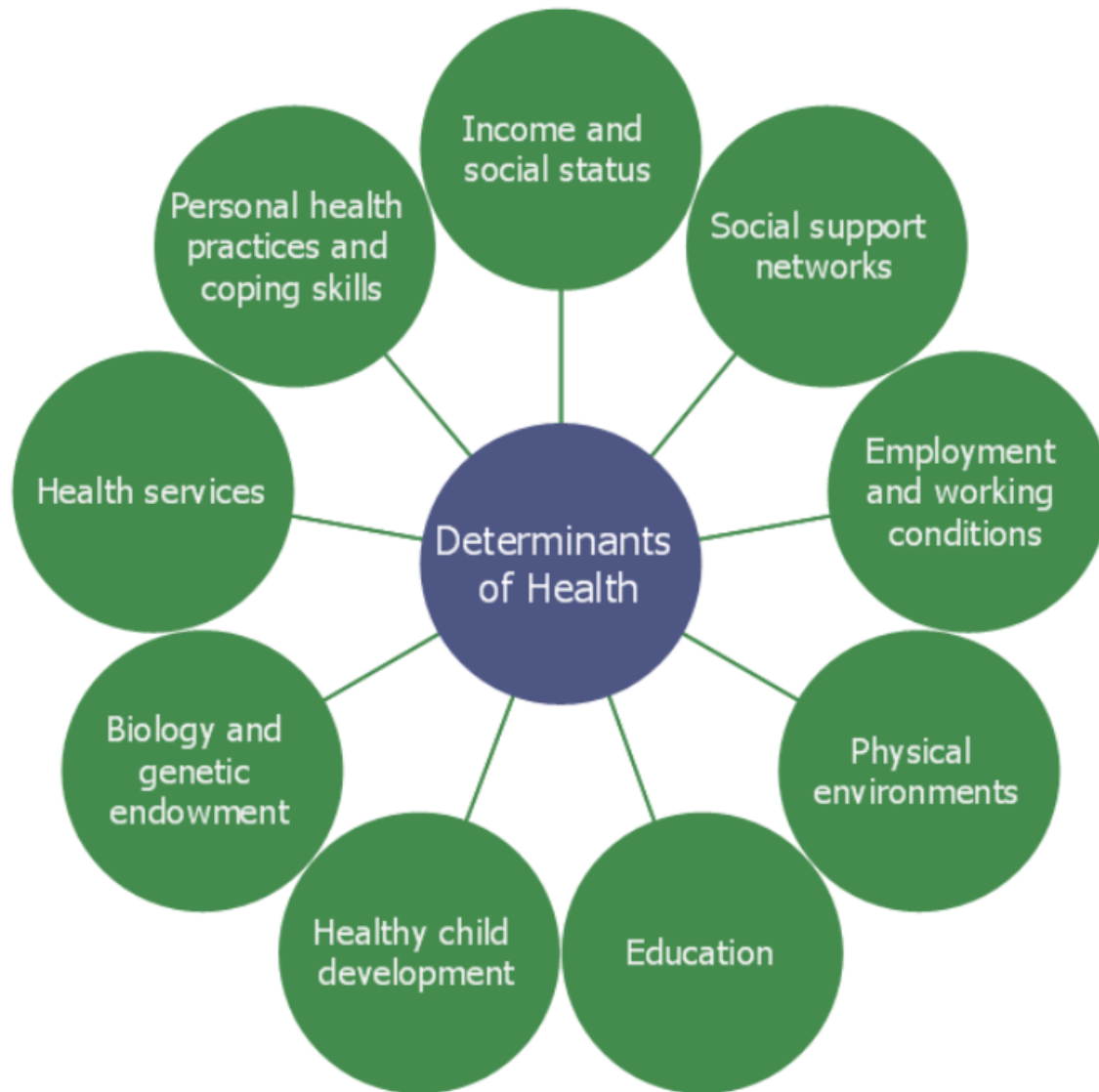


Poverty, Health, & Medicaid Reform

Brietta Clark
Associate Dean for Faculty & Professor of Law
Loyola Law School, Los Angeles

Next Steps in Health Reform
October 28, 2017



Promises: Health & Poverty

- ▶ **Is it the answer to our health care cost concerns?**
 - Achieving Better Health at Reduced Cost
 - Accountable Care
 - Value-Based Purchasing
 - State Flexibility to Tackle Social Determinants of Health

- ▶ **Does it have transformational possibilities?**
 - Is the health care “system” addressing the reality of poverty for health?
 - Is the “medicalization of poverty” really the best thing that ever happened to public health/social services sectors?

Some Hospitals Prescribe Food, Take Other Steps to Fight Food Insecurity

IRS rules and growing evidence pressure hospitals to do more to fight hunger in their communities.



Kaven Flowers, left, and K'Moira Jackson are two of the thousands of patients who have received free meals from Arkansas Children's Hospital in Little Rock. Courtesy Arkansas Children's Hospital

Medical Respite Programs

One study found that patients served by medical respite programs were 50% less likely to be readmitted to a hospital within 90 days after discharge compared with those who go directly back onto the street.

Modern Healthcare, Steven Ross Johnson,
<http://www.modernhealthcare.com/article/20140322/MAGAZINE/303229937>

2016 Map of Medical Respite Programs



The Source for Housing Solutions

[HOME](#) [PRESS ROOM](#) [CONTACT US](#)



[DONATE!](#)

Search CSH

Select Language ▼

[ABOUT CSH](#) [NEWS](#) [SUPPORTIVE HOUSING FACTS](#) [CSH SOLUTIONS](#) [WORK IN THE FIELD](#) [RESOURCES](#)

Advanced Search

Reenter Keywords

Housing is the Best Medicine: Supportive Housing and the Social Determinants of Health

State Flexibility to Tackle Social Determinants of Health through Medicaid

- Regional Care Collaborative Organizations
- Accountable Communities
- Integrated Health Partnerships
- Coordinated Care Organizations
- Accountable Care Organizations (Totally)



The screenshot shows the Partnership HealthPlan of California website. The header includes navigation links for Miembros, Участники, Miyembro, Language Assistance, Provider Online Services, PARx, Careers, and Contact Us. The main navigation bar has links for HOME, MEMBERS, PROVIDERS, ABOUT US, and COMMUNITY. The breadcrumb trail reads: Home | Providers | Quality Improvement | Social Determinants of Health.

The left sidebar menu includes: PROVIDER RELATIONS, CLAIMS, PHARMACY, QUALITY IMPROVEMENT (selected), PCP QIP, Hospital QIP, LTC QIP, HEDIS, Managing Pain Safely, Partnership Improvement Academy, and Patient Safety and Quality Assurance. Below this are HEALTH SERVICES and STRATEGIC INITIATIVES.

SOCIAL DETERMINANTS OF HEALTH

Social Determinants of Health (SDH), as defined by the World Health Organization, are "the circumstances in which people are born, grow up, live, work and age, and the systems put in place to deal with illness. These circumstances are in turn shaped by a wider set of forces: economics, social policies, and politics." Examples of social determinants of health include: employment, housing, food security, literacy, access to transportation, and education level. According to Healthy People 2020, the social determinants of health can be subdivided into five key areas:

- Economic Stability
- Education
- Social and Community Context
- Health and Health Care
- Neighborhood and Built Environment

The SDH Program at Partnership works in collaboration with key partners throughout the health system and within the community to target social determinants of health. Through working across sectors in various roles, PHC is working to alleviate social determinants of health and impact the health outcomes of our members and the communities we serve.



<http://www.partnershiphp.org/About/Pages/default.aspx>

<http://www.partnershiphp.org/Providers/Quality/Pages/Initiatives/Initiatives.aspx>

Implementation

▶ Partnership

- Cross Agency & Cross Sector
- Collaboration & Collective Action

▶ Community Health Teams

- Patient & Community Centered
- Cultural & Linguistic Competence

▶ Reliable Data Collection

- Uses: Interventions at Individual & Population Level; Rate Setting/Risk Adjustment for Payment; QC
 - Methods: Surveys; Screening; Database Sharing
- 

High Cost

High Need

High Risk

Super Utilizer

Frequent flyer

Complex

Chronic Conditions

Substance
Addiction

HIV

Mental health

Criminal Justice
Involvement

Pregnant Women



The Challenges of Using Medicaid to Tackle Social Determinants of Health

In many states, “fetal rights” laws are putting pregnant women in jail

https://www.salon.com/2013/10/24/in_many_states_fetal_rights_laws_are_putting_pregnant_women_in_jail/

November 18, 2004

No Second Chance

People with Criminal Records Denied Access to Public Housing

<https://www.hrw.org/report/2004/11/18/no-second-chance/people-criminal-records-denied-access-public-housing>

Republicans Pave The Way To Drug Test Poor And Jobless

http://www.huffingtonpost.com/entry/unemployment-drug-test_us_5899f21be4b0c1284f284bd7

Wisconsin seeks to mandate drug tests for Medicaid recipients

<https://www.bostonglobe.com/news/nation/2017/04/24/wisconsin-seeks-mandate-drug-tests-for-medicaid-recipients/DmFjnHzjtEL0cyLMOoj9SJ/story.html>

To Improve Health Care, How Do We Build Trust And Respect For Patients?





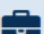

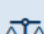

By Megan Collado, Tara Oakman, and Mona Shah (9/26/17)

From eleven funded studies, the RWJF and AcademyHealth report early findings about consumers' trust in the health care system. They also announce a Call for Proposals for empirical research to gain understanding of how to build patients' trust and foster mutual respect across the many facets of the system.

<http://healthaffairs.org/blog/2017/09/26/to-improve-health-care-how-do-we-build-trust-and-respect-for-patients/>

Data Collection

Exhibit 2: Current Data Collection on Common SDOH Domains in Select States†**

SDOH Domains	KS	MA	MI	NY	OR	TN	VT	WA
 Housing	✓	✓	✓	✓	✓	✓	✓	✓
 Family and Social Support	✓	✓	✓	✓		✓	✓	✓
 Education and/or Literacy	✓	✓	✓		✓		✓	✓
 Food Security		✓	✓		✓	✓	✓	✓
 Employment	✓	✓	✓	✓	✓	✓	✓	✓
 Transportation		✓	✓				✓	✓
 Criminal Justice Involvement	✓	✓		✓	✓		✓	✓
 Intimate Partner Violence		✓		✓	✓			

*Data collected from Medicaid beneficiaries at the individual and/or population level.

† Data not systematically collected on the entire Medicaid population.

Promises: Health & Poverty

- ▶ **Is it the answer to our health care cost concerns?**
 - Achieving Better Health at Reduced Cost
 - Accountable Care
 - Value-Based Purchasing
 - State Flexibility to Tackle Social Determinants of Health

- ▶ **Does it have transformational possibilities?**
 - Is the health care “system” addressing the reality of poverty for health?
 - Is the “medicalization of poverty” really the best thing that ever happened to public health/social services sectors?